

Dektite® EZi-Seal™ Hang-sell

Dektite® EZi-Seal™ products are now available in individual hang-sell packs with printed instructions and fasteners included.



Forget silicone – just screw it down

Dektite® EZi-Seal™ features a revolutionary closed-cell foam gasket which is non-absorbant and non-porous. It hugs the roof line to provide a watertight seal without the need for silicone.

CHECK THE BENEFITS!

- ✓ 100% waterproof
No silicone to apply - just screw it down in minutes
- ✓ Installs faster! Up to 30%
UV, ozone and temperature resistant foam
- ✓ Seals on wet or oily surfaces
Seals completely waterproof at only 40% compression
- ✓ No worries on polycarbonate
No silicone means no slippery surface or mess
- ✓ Twenty year warranty
Just fit it and forget it – we've got you covered



FS 520679
QUALITY ISO9001

Installation Information



1

Trim the cone to suit pipe size using sharp tin snips.



2

Slide down pipe using water as a lubricant.



3

Press base to the roof profile by hand.



4

Fasten using self-sealing fasteners or pop (sealed) rivets.



*

Use Dektite® EZi-Seal™ on the 'diamond' or bias for enlarged holes and penetrations on steep pitched roofs up to 45° or deep corrugations.

EASY SELECTION GUIDE

Features a revolutionary non-absorbent and non porous sponge gasket that seals by compression, even in wet conditions, it hugs the roof line to provide a watertight seal without the need for silicone adhesive.

Code No	Pipe External	Base mm	Inches	Pitch	
DFE 0-35EZ	0-35MM	0- $\frac{3}{8}$ "	99 X 99	39"	0-60° OR $1\frac{1}{2}$
DFE 5-55EZ	5-55MM	$\frac{1}{4}$ - $2\frac{1}{8}$ "	137 X 137	54"	0-45° OR $1\frac{1}{2}$
DFE 50-70EZ	50-70MM	2- $2\frac{3}{4}$ "	178 X 178	85 $\frac{3}{4}$ "	0-45° OR $1\frac{1}{2}$
DFE 5-120EZ	5-120MM	$\frac{1}{4}$ - $4\frac{3}{4}$ "	218 X 218	69 $\frac{1}{2}$ "	0-45° OR $1\frac{1}{2}$
DFE 110-170EZ	110-170MM	$4\frac{1}{2}$ - $6\frac{3}{4}$ "	284 X 284	111 $\frac{3}{4}$ "	0-45° OR $1\frac{1}{2}$
DFE 160-220EZ	160-220MM	$6\frac{1}{4}$ - $8\frac{3}{4}$ "	365 X 365	143 $\frac{1}{2}$ "	0-45° OR $1\frac{1}{2}$
DFE 160-300EZ	160-300MM	$6\frac{1}{4}$ - $11\frac{3}{4}$ "	453 X 453	178 $\frac{1}{2}$ "	0-45° OR $1\frac{1}{2}$
DFE 290-440EZ	290-440MM	$11\frac{1}{2}$ - $17\frac{3}{8}$ "	581 X 581	228 $\frac{1}{2}$ "	0-45° OR $1\frac{1}{2}$

Black (EPDM)*

Available in Black EPDM

EPDM will withstand constant temperatures at the roofline of -50°C (-122°F) to 115°C (239°F) & up to 150°C (302°F) intermittently.

FASTENING METHODS



Corrugated Roof

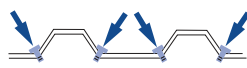


Tray Roof with Standard Rib



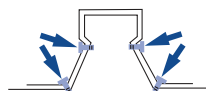
Tray Roof with High Rib

Dektite® EZi-Seal™ seals by compression, so ensure fasteners are evenly distributed (approx. every 40mm) around base. It is also essential that fasteners are placed in any valleys created when product forms around a roof ridge.



Fix Fasteners at points where base has creased to conform to roof profile.

On some roof profiles, such as Kliplok, an extra fastener is needed where it indents at the top of the ridge (see right).



- 10x16 Hex head self-drilling fasteners.
- After screw-fixing the base, flatten the aluminium between the fixings to compress the foam.
- Always install a fixing into the corners of the profile to fully seal against the sheet.
- Make sure the foam is compressed by at least 40% all the way round to ensure an effective seal.

IMPORTANT

Silicone does not affect the foam gasket

For higher temperatures always use the Dektite Silicone range go to www.deks.com.au for more information on the full range.