

### Dektite® Premium™



#### Perfect for flashing pipes on metal roofs

A multi-application flashing with a highly durable EPDM cone and base, edged with a flexible aluminium strip, flashes hot or cold flues and pipes on metal roofs. The square base fits any prepared hole on most roofs profiles.

Product Code	Pipe External	Base Sizes	Pitch
DFE 0-20	0-20mm	0 - 3/4"	70 x 70mm 2 3/4 x 2 3/4" 0-60° or 18/12
DFE 0-35	0-35mm	0 - 1 1/8"	99 x 99mm 4 x 4" 0-60° or 18/12
DFE 5-55	5-55mm	1/4 - 2 1/8"	137 x 137mm 5 1/2 x 5 1/2" 0-45° or 12/12
DFE 50-70	50-70mm	1/4 - 4 3/4"	218 x 218mm 8 1/2 x 8 1/2" 0-45° or 12/12
DFE 5-120	5-120mm	2 - 2 3/4"	177 x 177mm 7 x 7" 0-45° or 12/12
DFE 110-170	110-170mm	4 1/2 - 6 3/4"	284 x 284mm 11 1/4 x 11 1/4" 0-45° or 12/12
DFE 160-220	160-220mm	6 1/4 - 8 3/4"	365 x 365mm 14 1/4 x 14 1/4" 0-45° or 12/12
DFE 160-300	160-300mm	6 1/4 - 11 3/4"	453 x 453mm 17 3/4 x 17 3/4" 0-45° or 12/12
DFE 290-440	290-440mm	11 1/2 - 17 3/8"	581 x 581mm 23 x 23" 0-45° or 12/12

Available in Grey, Black EPDM and Red Silicone.

### Dektite® Original



#### The original watertight flashing for metal roofs

The original watertight flashing designed to seal both hot and cold flues and pipes on metal roofs. A strong water tight seal and a strong flexible base with the aluminium band.

Product Code	Pipe external	Roof pitch	Product Code	Pipe external	Roof pitch
DF100	0-35mm	0-1 1/2"	DF201RE	5-65mm	1/4 - 2 1/2"
DF101	5-65mm	1/4 - 2 1/2"	DF202RE	45-80mm	1 3/4 - 3 1/4"
DF102	45-80mm	1 3/4 - 3 1/4"	DF203RE	5-127mm	1/4 - 5"
DF103	5-127mm	1/4 - 5"	DF204RE	73-160mm	3 - 6 1/4"
DF104	73-160mm	3 - 6 1/4"	DF205RE	108-190mm	4 1/4 - 7 1/2"
DF105	108-190mm	4 1/4 - 7 1/2"	DF206RE	125-230mm	5 - 9"
DF106	125-230mm	5 - 9"	DF207RE	150-280mm	6 - 11"
DF107	150-280mm	6 - 11"	DF208RE	175-330mm	7 - 13"
DF108	175-330mm	7 - 13"	DF209RE	254-483mm	10 - 19"
DF109	254-483mm	10 - 19"			

EPDM will withstand constant temperature at the roofline of -50°C to 115°C (-122°F to 239°F) & up to 150°C (302°F) intermittently.

Silicone will withstand constant temperature at the roofline of -50°C to 200°C (-112°F to 392°F) & up to 250°C (482°F) intermittently.

### Dektite® Combo



#### Flash over or around

A standard Dektite and Retrofit all in one

Product Code	Pipe External	Base Sizes	Pitch
DC101	5-60mm	1/4 - 2 1/2"	139 x 139mm 5 1/2 x 5 1/2" 0-60° OR 18/12
DC102	45-80mm	1 3/4 - 3 1/4"	179 x 179mm 7 x 7" 0-45° OR 12/12
DC103	5-125mm	1/4 - 5"	216 x 216mm 8 1/2 x 8 1/2" 0-45° OR 12/12
DC104	73-160mm	3-7"	285 x 285mm 11 1/4 x 11 1/4" 0-45° OR 12/12
DC105	108-190mm	4 1/4 - 7 1/2"	366 x 366mm 14 1/4 x 14 1/4" 0-60° OR 18/12
DC106	125-230mm	5-9"	366 x 366mm 14 1/4 x 14 1/4" 0-45° OR 12/12
DC107	150-280mm	6-11"	454 x 454mm 17 3/4 x 17 3/4" 0-45° OR 12/12
DC108	175-330mm	7-13"	454 x 454mm 17 3/4 x 17 3/4" 0-45° OR 12/12
DC109	240-508mm	9 1/2 - 20"	685 x 685mm 27 x 27" 0-45° OR 12/12
DC Clip	25 Twins		

#### Combo Square Selection Guide

Product Code	Pipe External	Base Sizes	Pitch
DCS103	20-125mm	3/4-5"	139 x 139mm 5 1/2 X 5 1/2" 0-45° OR 12/12

Available in Black EPDM.

### Dektite® Ezi-Seal™



#### Forget Silicone just screw it down

Features a revolutionary non-absorbent and non porous sponge gasket that seals by compression, even in wet conditions, it hugs the roof line to provide a watertight seal without the need for silicone sealant.

Product Code	Pipe External	Base Sizes	Pitch
DFE 0-35EZ	0-35mm	0 - 3/4"	99 x 99mm 4 x 4" 0-60° OR 18/12
DFE 5-55EZ	5-55mm	1/4 - 2 1/8"	137 x 137mm 5 1/2 x 5 1/2" 0-45° OR 12/12
DFE 50-70EZ	50-70mm	2 - 2 3/4"	178 x 178mm 7 x 7" 0-45° OR 12/12
DFE 5-120EZ	5-120mm	1/4 - 4 3/4"	218 x 218mm 8 1/2 x 8 1/2" 0-45° OR 12/12
DFE 110-170EZ	110-170mm	4 1/2 - 6 3/4"	284 x 284mm 11 1/4 x 11 1/4" 0-45° OR 12/12
DFE 160-220EZ	160-220mm	6 1/4 - 8 3/4"	365 x 365mm 14 1/4 x 14 1/4" 0-45° OR 12/12
DFE 160-300EZ	160-300mm	6 1/4 - 11 3/4"	453 x 453mm 17 3/4 x 17 3/4" 0-45° OR 12/12
DFE 290-440EZ	290-440mm	11 1/2 - 17 3/8"	581 x 581mm 23 x 23" 0-45° OR 12/12

Available in Black EPDM.

### Dektite® Soaker™



#### For Hi/Low Roof Pitches

The large base of a Dektite Soaker dramatically reduces rainwater back up on very low or very high roof pitches and deep ribbed roofing profiles.

Product Code	Pipe External	Base Sizes	Pitch	Carton QTY
DF602	75-155mm	3 - 6"	410 x 360mm 16 x 14" 0-60° or 18/12	2
DF603	114-254mm	4 1/2 - 10"	485 x 460mm 19 x 18" 0-60° or 18/12	2
DF605	254-406mm	10 - 16"	708 x 640mm 27 3/4 x 25" 0-60° or 18/12	2
DF606	380-610mm	15 - 24"	110 x 905mm 39 3/4 x 35 1/2" 0-60° or 18/12	1

Available in Grey EPDM and Red Silicone.

### Retrofit Original



#### For Repairs & Difficult To Access Pipes

Most commonly used when flashing around an existing penetration when going over the top of pipe material is not an option. The unique patented zip lock does not require separate clips – just clamp it together.

Product Code	Pipe External	Base Sizes	Pitch
RF 801	20-70mm	3/4 - 2 3/4"	160mm 6 1/2" 0-40° or 10/12
RF 802	50-190mm	2 - 7 1/2"	273mm 10 9/16" 0-40° or 10/12
RF 803	85-255mm	3 1/4 - 10"	369mm 14 1/2" 0-40° or 10/12
RFS 4	235-425mm	9 1/4 - 16 3/4"	762 x 680mm 30 x 26 3/4" 0-40° or 10/12
RF 901	20-70mm	3/4 - 2 3/4"	160mm 6 1/2" 0-40° or 10/12
RF 902	50-190mm	2 - 7 1/2"	273mm 10 9/16" 0-40° or 10/12
RF 903	85-255mm	3 1/4 - 10"	369mm 14 1/2" 0-40° or 10/12
RF S24	235-425mm	9 1/4 - 16 3/4"	762 x 680mm 30 x 26 3/4" 0-40° or 10/12

Available in Grey EPDM and Red Silicone.

### Aluminium



The SELDEK® Aluminium™ won't stain or corrode spouting and gutters. The EPDM cone, which is trimmed on site to fit, is ingeniously locked to a high grade and malleable 99.9% pure aluminium base.

Product Code	Pipe External	Base Sizes	Pitch	Carton QTY
SDAMiniB	0-30mm	0 - 1 1/2"	500x600mm 19 1/4 x 23 3/4" 0-45° or 12/12	3
SDA100B	12-70mm	1/2 - 2 3/4"	500x600mm 19 1/4 x 23 3/4" 0-45° or 12/12	3
SDA101B	50-170mm	2 - 6 3/4"	500x600mm 19 1/4 x 23 3/4" 0-45° or 12/12	3
SDA102B	110-200mm	4 1/2 - 8"	500x600mm 19 1/4 x 23 3/4" 0-45° or 12/12	3
SDA103B	160-300mm	6 1/4 - 11 3/4"	764x764mm 30 x 30" 0-45° or 12/12	5
SDA104B	300-450mm	12 - 17 3/4"	956x956mm 37 x 37" 0-45° or 12/12	5

Available in Black EPDM.

### Dekform



#### Lead Flashings No Longer Required

Designed as an environmentally friendly product eliminating concerns caused by using lead. Designed to suit all tiled roof flashing applications. A great product choice when Rain Water Harvesting is in use. Keep your water clean from contamination.

Product Code	Pipe External	Sheet Size	Product Code	Pipe External	Sheet Size				
DFM100GB	0-30mm	0 - 1 1/2"	410 X 490mm	16 x 19"	DFM200GR	0-30mm	0 - 1 1/2"	410 X 490mm	16 x 19"
DFM101GB	12-70mm	1/2 - 2 3/4"	410 x 490mm	16 x 19"	DFM201GR	12-70mm	1/2 - 2 3/4"	410 x 490mm	16 x 19"
DFM102GB	50-170mm	2 - 2 3/4"	600 x 450mm	24 x 18"	DFM203GR	50-170mm	2 - 6 3/4"	600 x 450mm	24 x 18"
DFM103GB	50-170mm	2 - 6 3/4"	600 x 450mm	24 x 18"					
DFM108GB	175-330mm	7 - 13"	850 x 550mm	34 X 22"					

### Nu Lead



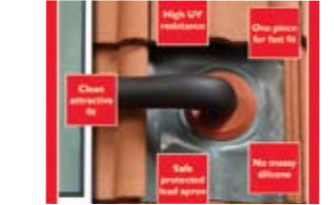
#### No more worries about unprotected lead

Combines a long – life weather resistant EPDM cone with grey primed Thermo-Baked Acrylic Primer coating. The unique thermo baked coating does not affect the lead's malleability, and prevents leaching onto the roof and into gutter, down pipes and the water table.

Product Code	Pipe External	Pitch	Product Code	Pipe External	Pitch		
DNL100B	0-30mm	0 - 1 1/2"	0-40° or 10/12	DNL200RE	0-30mm	0 - 1 1/2"	0-40° or 10/12
DNL101B	12-70mm	1/2 - 2 3/4"	0-40° or 10/12	DNL201RE	12-70mm	1/2 - 2 3/4"	0-40° or 10/12
DNL102B	50-70mm	2 - 2 3/4"	0-40° or 10/12	DNL202RE	50-70mm	2 - 2 3/4"	0-40° or 10/12
DNL103B	50-170mm	2 - 6 3/4"	0-40° or 10/12	DNL203RE	50-170mm	2 - 6 3/4"	0-40° or 10/12
DNL108B	175-330mm	7 - 13"	0-40° or 10/12	DNL208RE	175-330mm	7 - 13"	0-40° or 10/12

Available in Red Silicone & Black EPDM with grey lead base.

### Solar Solutions



Designed specifically for solar panel installation on both metal and tile roofs. Fast. Efficient. Safe.

Product Code	Pipe External	Base Sizes	Pitch	Carton QTY
DNL100B	0-30mm	0 - 1 1/2"	410 x 490mm 19 x 16" 0-45° or 12/12	4
DNL 200RE	0-30mm	0 - 1 1/2"	410 x 490mm 19 x 16" 0-45° or 12/12	4
DFE 0-35	0-35mm	0 - 1 3/8"	99 x 99mm 4 x 4" 0-60° or 18/12	20
SDA100	12-70mm	1/2 - 2 3/4"	500 x 600mm 19 1/2 x 23 3/4" 0-60° or 18/12	20

Available in Black EPDM, DNL200 is Red Silicone for higher heat needs.

